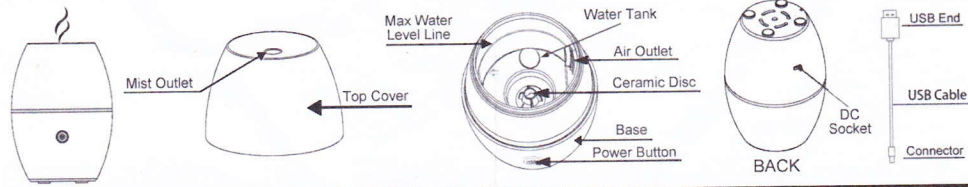


Mistifier™ Ultrasonic Essential Oil Diffuser INSTRUCTIONS

PARTS



FEATURES

Ultrasonic vibrations transform your essential oil and water into healthy, fragrant mist.

1. Water Capacity: 100 mL (3.38 fl oz)
2. Suggested Room Size: Up to 150 sq ft
3. Continuous Operation: Up to 4 hours
Intermittent Operation: Up to 8 hours
at 30-sec intervals
** Run time will vary depending on humidity levels and other external factors.*
4. Light Mode: Warm white, soft white, and Off
5. Automatic safety shut-off
6. Power: Includes USB Cable (fits into any standard USB port)

CARE & MAINTENANCE

Only use the power cord that is supplied with the unit. Always remove the power cord before cleaning. Essential oil should not come in contact with the exterior surface of the unit.

TO CLEAN:

* SpaRoom® KLENZOR™ tablets may be used to renew diffuser to like-new condition.

Remove Top Cover. Empty water from the Base in the direction of the arrow, opposite the Air Outlet. Rinse Base with hot tap water to ensure buildup is removed. Allow unit to dry thoroughly.

The Ceramic Disc should not come in contact with any hard or sharp objects.

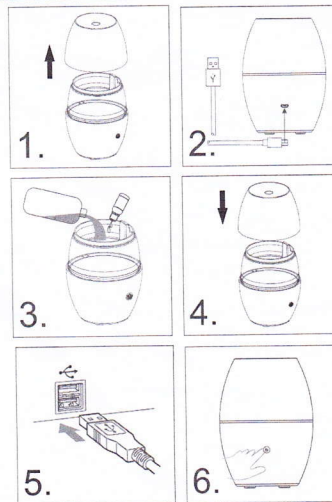
To remove possible mineral buildup, gently use a cotton swab dipped in white vinegar to wipe out the inside.

Do not use strong cleaning agents.

INSTRUCTIONS FOR USE

Place diffuser on a flat, water-resistant surface.

1. Remove the Top Cover from the Base.
2. Plug the Connector of the USB Cable into the DC Socket in the back of the unit.
3. Pour tap water into the Water Tank up to the Max Water Level Line. Add a few drops of essential oil to your desired strength directly into the Water Tank.
** Recommended drops of oil: 2-3 drops*
4. Replace the Top Cover onto the Base.
5. Plug the USB End of the USB Cable into any USB Port.
6. **Button Functions:**
1st Push = Continuous mist with warm white light
2nd Push = Intermittent mist with soft white light
3rd Push = Turns unit off



NOTES:

- Only use 100% pure or natural essential oil. Other types, such as fragrance and synthetic oils, may cause corrosion that can damage your diffuser and void our warranty.
- The diffuser will automatically turn off when water level becomes too low.
- Disconnect USB Cable from power source when not in use.